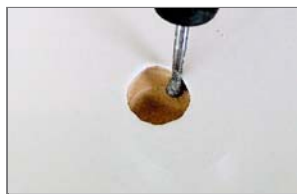


Step by step

1.) Prepare



1. Initial situation



2. Create undercut areas with a round diamond bur



3. Remove dust with bellows



4. Clean prepared areas with cleaning solution and a microbrush



5. Provide a silicate layer with Pyrosil Gas



6. Apply StoneLux® Tile Primer in a thin, even coating to all surfaces and allow to evaporate

2.) Repair



1. Use the Colour materials to create a shade that blends in with the colour of the tile in need to repair; apply the mix-



2. Light-cure for 60 seconds. Check the shade match and adjust as necessary



3. Remove colour pattern; fill deep defects with StoneLux® Tile Gel up to 2mm below the margin of the preparation

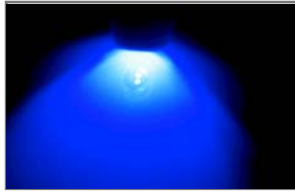


4. Light-cure for 60 seconds

ture



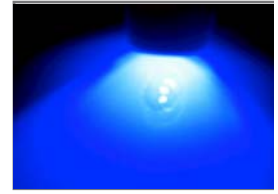
5. Coat with StoneLux® Tile Opaquer (apply material in thin layer)



6. Light-cure for 60 seconds



7. Apply the shade-mixture, providing a slight overfill



8. Light-cure for 60 seconds

3.) Finish



1. Use the composite planer to remove excess material



2. Rub repaired surface down with wet Silicone Abrasive Fabric (2400/3200/4000), applying light pressure. (Stretch the fabric over the polishing block, avoiding folds or creases, and grip firmly)



3. Apply StoneLux® Tile Polishing Paste and polish using the felt surface of the polishing block

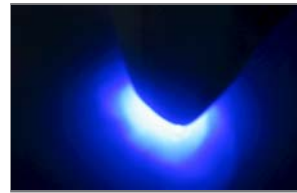


Alternatively, a felt polishing disk can be used: Instead of polishing paste, Gigalux polishing wax may be applied and polished with a goat hair polisher

Relief Technique for textured surfaces



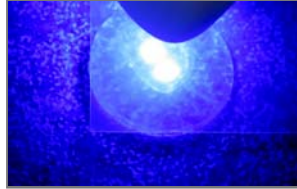
1. To create as textured surface lightly tap the uncured uppermost layer with a texture brush until the desired surface texture is achieved



2. Light-cure for 5 seconds



3. Carefully apply StoneLux® Tile Air Barrier Gel into the surface



4. Flatten the gel into the textured surface using transparent foil and final light-cure for 60 seconds

Retouch Technique for shade characterizations



1. Apply a small amount of characterization shade onto the cured ground colour



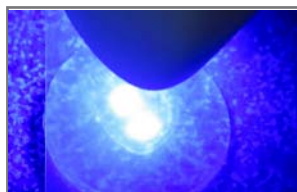
2. Flatten the characterization material with transparent foil; remove excess material from the foil



3. Create the desired characterization with dabbing up and down motion



4. Light-cure for 5 seconds



5. Apply StoneLux® Tile Air Barrier Gel and final light-cure for 60 seconds